

5-200MHz

CATV

Reverse

QCE

Hybrid Amplifier Module

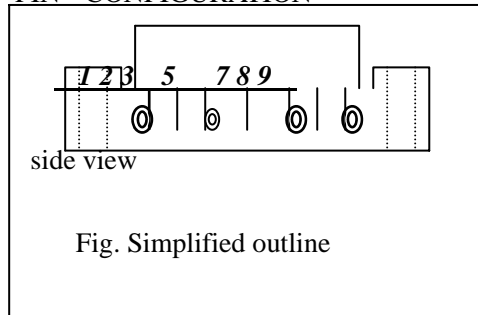
500 LOT \$9.99 each!!

FEATURES

- POWER GAIN 24 dB
- LOW DISTORTION
- EXCELLENT LINEAR GAIN
- LOW NOISE FIGURE
- HIGH RELIABILITY
- LOW COST
- INDUSTRY COMPATIBLE PACKAGE

OUTLINE

PIN CONFIGURATION



DESCRIPTION

Hybrid amplifier module for CATV systems operating over a frequency range of 5 to 200 MHz at a voltage supply of +24 V(DC). The device is intended as a reverse amplifier for use in two systems.

Pin	Description
1	Input
5	+V _B
9	Output
2,3,7,8	Common

ELECTRICAL CHARACTERISTICS (Bandwidth 5 to 200 MHz)

PART NUMBER			CR223			CONDITIONS
SYMBOLS	PARAMETERS	UNITS	MIN	TYP	MAX	
BW	Frequency Range	MHZ	5	-	200	
GA	Gain	dB	23.5	24.0	24.5	f = 200 MHz
S	Gain Slope	dB	0	-	0.5	f = 5 to 200 MHz
Gf	Gain Flatness	dB	-	±0.3	-	f = 5 to 200 MHz
S11	Input Return Loss	dB	18	-	-	f = 5 to 200 MHz
S22	Output Return Loss	dB	16	-	-	f = 5 to 200 MHz
CTB	Composite Triple Beat	dB	-	-63	-	
d ₂	Second Order Distortion	dB	-	-60	-	
Xmod	Cross Modulation	dB	-	-58	-	
I _{tot}	Total Current Consumption	mA	-	118	-	DC value; V _B = +24V
NF	Noise Figure	dB	-	-	6.0	f = 200 MHz
V ₀	Output Voltage	dBμV	-	113	-	
T _{OP}	Operating Temperature	□	-20	-	120	
T _{STG}	Storage Temperature	□	-30	-	120	

